

Cape Hatteras National Seashore Sea Turtle Management



Anthony DeSocio
Park, Recreation, and
Tourism Studies
adeso003@odu.edu

Internship and Case Study Goals

- Learn the basic functions of day to day operations within a federal park or protected area
- Assist the host institution through visitor interaction management
- Research a wicked problem within the host institution that requires the use of best available data and create a list of recommendations to get to a desirable future

Reccomendations

- Create a collaborative decision-making task force to determine the desired future that can be used to set a goal
- Perform a agency-wide survey to understand the various management strategies used by each park unit and their justification for its use
- Create a management guideline that maintains the high level of agency flexibility while formalizing management goals to mitigate and adapt to the hazards to sea turtles
- Continually monitor the various invasive species that threaten sea turtles and sea turtle habitats

The Wicked Problem and Threats

- Managing for Sea Turtles within the National Park Service: Balancing federal mandates, public opinion, and best available science at Cape Hatteras National Seashore
- Plastic pollution, Sea level rise and erosion, Invasive predators, Coastal Development, and accidental capture in fishing equipment are the main threats to sea turtle populations
- The park can only manage the shoreline, not the waters

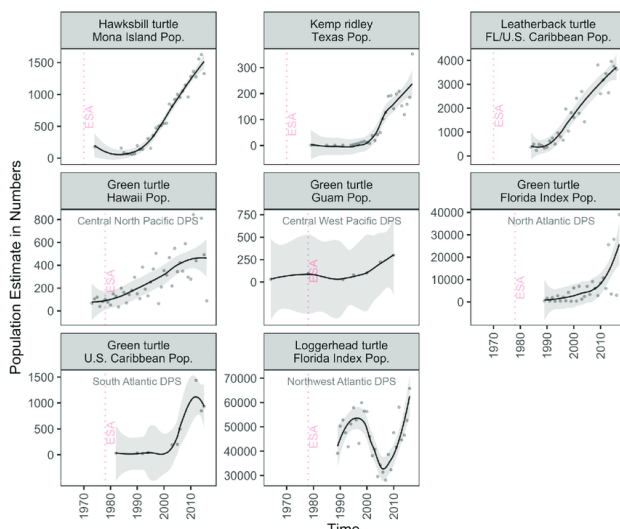


Figure 2: Valdiva et al., 2019



Figure 1: Thompson et al., 2019