



**Hampton Roads Sea Level
Rise/Flooding Adaptation Forum
July 10, 2013**

Washington Post

May 22, 2013 | NORFOLK, Va. - Flood-prone Norfolk is one of eight cities nationwide chosen by the Rockefeller Foundation for a program to finance and build better storm water infrastructure.



COLONY OF VIRGINIA



200 4 3 2 1 0 200 1,000 feet



James City Point 1609

NORFOLK COUNTY established 1681

DUN IN THE MIRE 1646

MAIN BRANCH
ELIZABETH
RIVER 1635

FOUR
FARTHING
POINT

first EASTERN BRANCH

Royal Governors:

Thomas, Second Lord Culpeper, Baron Thersway,
Governor and Captain-General, 1607-1611;
Sir Henry Chicheley, Deputy Governor,
Francis, Lord Howard of Effingham,
Lord Admiral of the Fleet, 1611-1612;
Colonel Francis Nicholay,
Lieutenant Governor, 1612-1614;
Sir Edmund Bacon,
Governor and Captain-General, 1614-1616;
George Hamlyn, Deputy, Earl of Berkeley,
Governor-in-Chief, 1616-1617.

Annual Fair:

The 17000 Day of October and 4 days
Following, exclusive of Sunday.

Market Days:

Tuesday and Saturday

ORIGINAL 50 ACRES

sold and conveyed by Nicholas Mize,
Whitworth, to Nicholas, William Robinson
and William Stevens, Partners in front
for the Norfolk Town Land. In witness
whereof, I have hereunto put my hand
& set my Seal and Seal, this 10th day of
August, 1682, and in the 10th year of the
reign of our sovereign lord, King Charles the
Second, now England, Scotland, France and
Ireland, defender of the faith,
Nich. Mize and Seal
Mark.



Norfolk towne

John Fawcett, County Surveyor, 1681-82

Bureau of Surveys, Norfolk, Virginia
compiled by Grover Franklin
drawn by Lionel P. Brown

NORFOLK'S ORIGINAL FIFTY ACRES



John Ferebee, County Surveyor 1680 - 1681
John Ward, City Surveyor 2006 - Present



This map depicts the original fifty acres of Norfolk overlaid upon 2013 imagery. This was created in multiple steps.
First, the original "Norfolk Towne, 50 Acres, 1682" map was scanned.

Next, city staff consulted with local historians to determine sites that still exist today.
Then, field crews were sent out to collect GPS coordinates on the previously determined locations.

Finally, the scanned image was georeferenced to the GPS points
and the fifty acre boundary was digitized by a city technician.

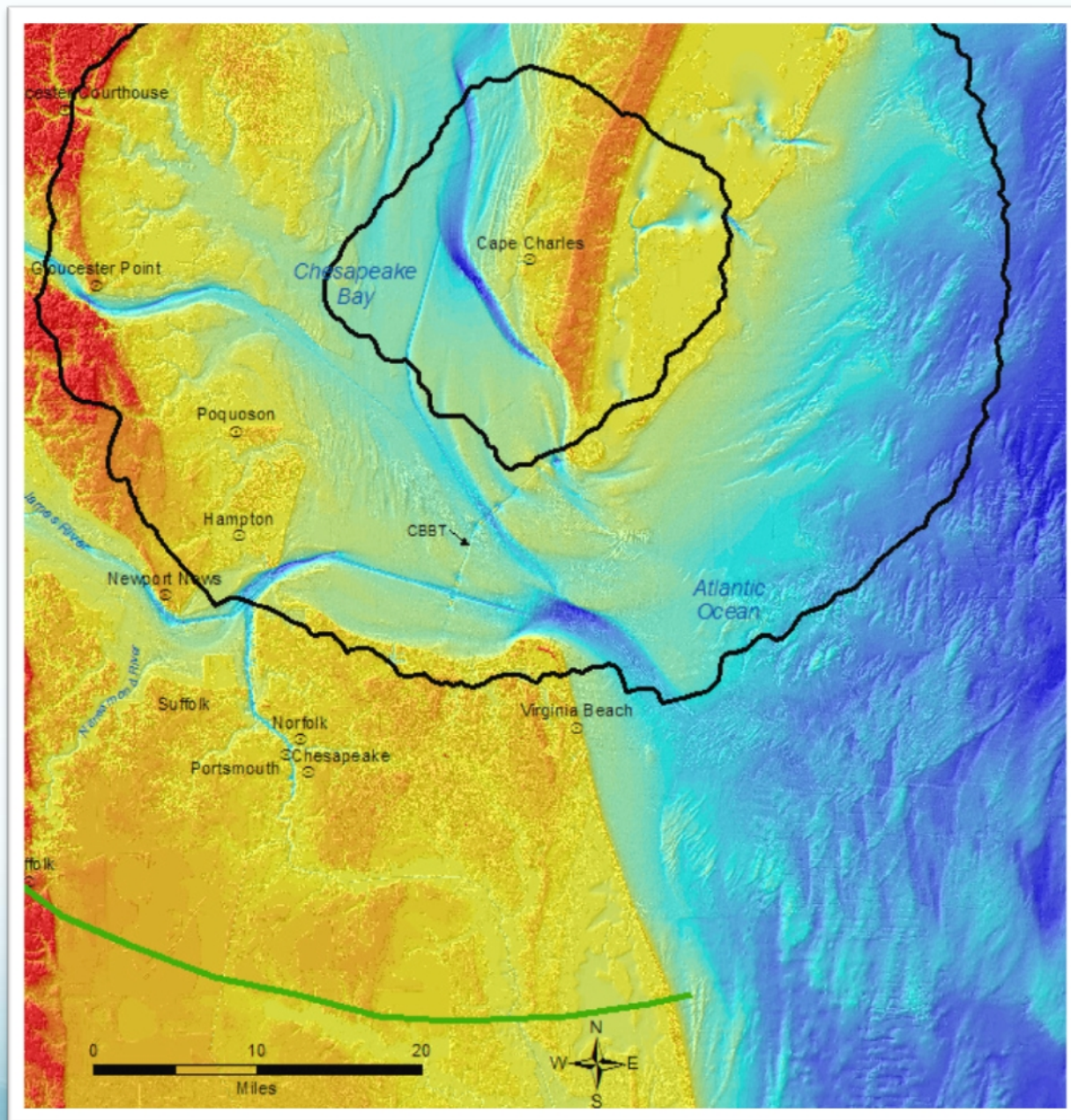
2013 Imagery is property of Pictometry International.

Map composed October 2008, Updated 2013.

This map is for graphic purposes only.



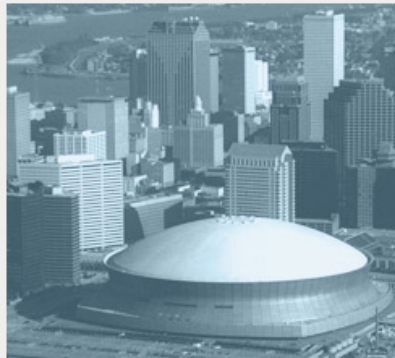




Seeking Private Sector Investment



[Home](#) [About RE.invest](#) [RE.invest Team](#) [Partner Cities](#) [Media](#) [Contact Us](#)



Re.invest Initiative cities include: El Paso, Hoboken, Honolulu, Miami, Milwaukee, New Orleans, Norfolk and San Francisco

Post-Sandy initiative to develop resilient urban stormwater infrastructure

- Two-year initiative, funded by the Rockefeller Foundation.
- Rethink the way cities design, plan, implement and finance urban infrastructure.
- RE.invest will reduce the burden placed on city personnel and public budgets by using public resources more efficiently and attracting new sources of private investment.

Provides technical assistance from engineering, law and finance experts

"The RE.invest initiative is a smart approach for cities looking to improve vital infrastructure in a way that attracts new sources of private investment. We are... providing the type of credible financial experts who will think creatively about ways to invest in the resilience of our communities."

--- John Nelson, Managing Partner of Wall Street Without Walls

Making projects on the drawing board a reality

"We are looking forward to using our technical know-how, our history of applying creative thinking to infrastructure planning, and our ability to help make projects become a reality."

--- Walker Kimball, Managing Director,
Infrastructure, at Bechtel



Smart planning, innovation and an integrated approach

- Focus on sustainable stormwater infrastructure systems: green rooftops, trees, wetlands and repaved roads with more permeable surfaces.
- Partners will identify new ways to bundle revenue streams so cities can effectively work with private investors and the private sector to make smart improvements to their local infrastructure.
- RE.invest will help cities and private sector partners connect the dots. Can power lines be buried when the road is opened? Can the road be repaved with absorbent asphalt to reduce water runoff ?



Norfolk Flooding Strategy

Plan

- City planning
- Study and analysis
- Modeling & simulation

Prepare

- Emergency Preparedness & Response
- Education & Training

Communicate

- Citizen outreach
- Partnerships
- Online resources

Mitigate

- Infrastructure development
- Flood remediation and mitigation

